



Sabancı
Universitesi



An Innovative University with a Successful Research and IP Management System

Dr. Cemil Arıkan
Sabancı University

TRANSATLANTIC EU - U.S. COOPERATION ON INNOVATION AND TECHNOLOGY TRANSFER

March 22, 2011

Vienna

Higher Education in Turkey



- Universities
 - State (102)
 - Foundation (54)
- Higher Education Council (HEC)

Foundation Universities



- Not to profit organizations
- Self Financed (State Contribution is minimum)
- Accountable to HEC.
- Important element of Turkish higher education

Sabancı University



- Sabancı Group is the second biggest industrial group in Turkey
- Sabancı Foundation since 1955, made more than 150 investments all around Turkey(Schools, dormitories, hospitals etc) within their social responsibility projects
- Founder of the Sabancı University

400 M\$ Investment since 1994

10-15 M\$ subsidy every year.

The creation process was long and inclusive



- July 1994 Resolution by Sabancı Holding Executive Board
- August 1995 Search Conference with 52 participants from 22 countries & Formulation of “The Philosophy”
- February 1996 Various Task Forces Start Working on Curricular and Administrative Structure



The creation process was long and inclusive



- July 1997 Groundbreaking by the President of Turkey
Announcement of the Board of Trustees
& The University President
- October 1999 First Academic Year



We are guided by our Philosophy



“Creating and Developing Together”

Key Words

- Student Focused
- Participative
- Responsible and Responsive
- Practice Relevance
- Developing science and technology, disseminating knowledge
- Interdisciplinary
- Self-Managing /
- Self-Sustaining
- Teamwork
- Local / Regional / Global
- Learning to Learn

Our Mission



is to develop competent and confident individuals,
enriched with the ability to reflect critically and independently,
having a strong sense of social responsibility;
and
to contribute to the development of science and technology,
as well as disseminating the knowledge created
to the benefit of the community.

Board of Trustees



Güler Sabancı	Chairperson
Prof. A. Nihat Berker	President
Dr. Can Paker	BOY Management Services
Halis Komili	Komili Holding
Hayri Çulhacı	Akbank
Muharrem Kayhan	Söktaş Holding
Prof. Sadık Esener	Nano-Tumor Center, University of California at San Diego
Sevil Sabancı	Sabancı Holding
Suzan Sabancı Dinçer	Akbank

International Board of Overseers



Güler Sabancı	Sabancı Holding
Lady Barbara T. Judge	UK Atomic Energy Authority, Chairperson
Baron Paul Buysse	N.V. Bekaert S.A, Chairman of the Board
Candace Johnson	Johnson Paradigm Ventures, President
Lord Chris Patten	Oxford University, Chancellor
Prof. David Pines	Institute for Complex Adaptive Matter, Co-Director
Dr. Kemal Dervis	Bookings Institute, Vice President
Senator Phil Gramm	UBS Investment Bank, Vice Chairman
Richard Christou	Fujitsu Services, Executive Chairman
Dr. Rolf E. Breuer	Deutsche Bank, Former Chairman of the Supervisory Board
Shoshi Arakawa	Bridgestone Corporation, Chairman of the Board and CEO
Prof. Timothy W. Tong	The Hong Kong Polytechnic University, President
Dr. Xiang Wang	Orrick, Herrington & Sutcliffe LLP, Partner

Our distinguishing characteristics set us apart



- Interdisciplinarity: ***No Academic Departments!***
- Opportunity for students to decide on their academic field at the end of sophomore year to choose the degree program and selecting the most appropriate field through:
 - Acquiring knowledge on different topics
 - Effective tutoring system
- **Foundations Development Program:**
 - School of Languages (*English, Turkish and other second foreign languages*)
 - University Courses

Undergraduate Degrees



Faculty of Engineering and Natural Sciences

- Computer Science and Eng.
- Biological Sciences and Bioeng.
- Electronics Engineering
- Materials Science and Eng.
- Manufacturing Systems Eng.
- Mechatronics

Faculty of Arts and Social Sciences

- Cultural Studies
- Economics
- Social and Political Sciences
- Visual Arts & Visual Communication Design

Faculty of Management

- Management

Minor Honor Programs in Mathematics, Chemistry, Physics, Art Theory and Criticism

Graduate Degrees



Graduate School of Engineering and Natural Sciences

- Biological Sciences and Bioengineering
- Computer Science & Engineering
- Electronics Engineering
- Physics
- Industrial Engineering
- Information Technology
- Leaders For Industry (*with FMAN*)
- Materials Sciences and Engineering
- Mathematics
- Mechatronics

Graduate School of Social Sciences

- Conflict Analysis & Resolution
- Cultural Studies
- Economics
- European Studies
- History
- Political Sciences
- Turkish Studies
- Visual Arts & Visual Communication Design

Graduate School of Management

- Master of Business Administration - MBA
- Executive MBA
- Master in Finance
- PhD in Management

We attract young but experienced Faculty Members



	# of Faculty	Av. Age	PhD Abroad	Last Place of Work Abroad	Av. Years of Non-Academic Work Exp.
TOTAL	172	43,7	150	60%	4,4

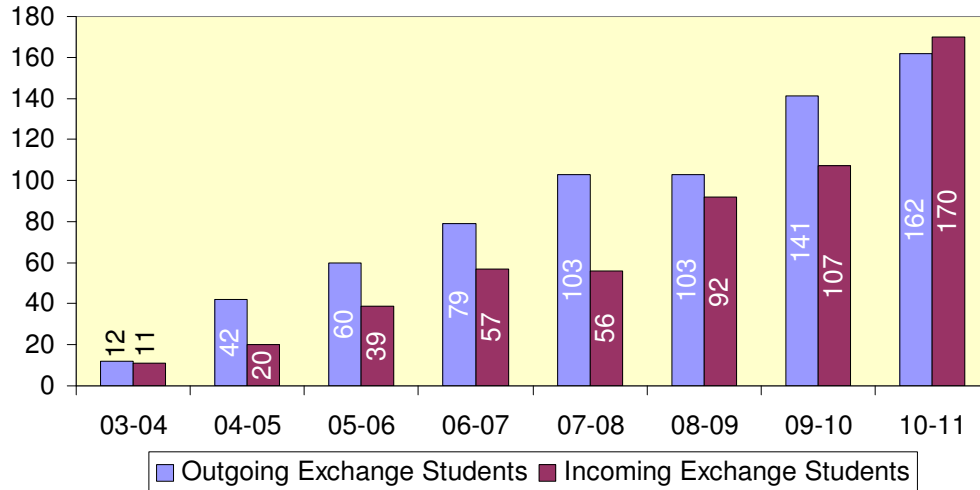
	# of Instructors	Average Age	# and % of Native Speakers	Av. Years of Teaching Exper.
School of Languages	58	40	22 (38%)	17

Ratio of International Faculty Members = 15%

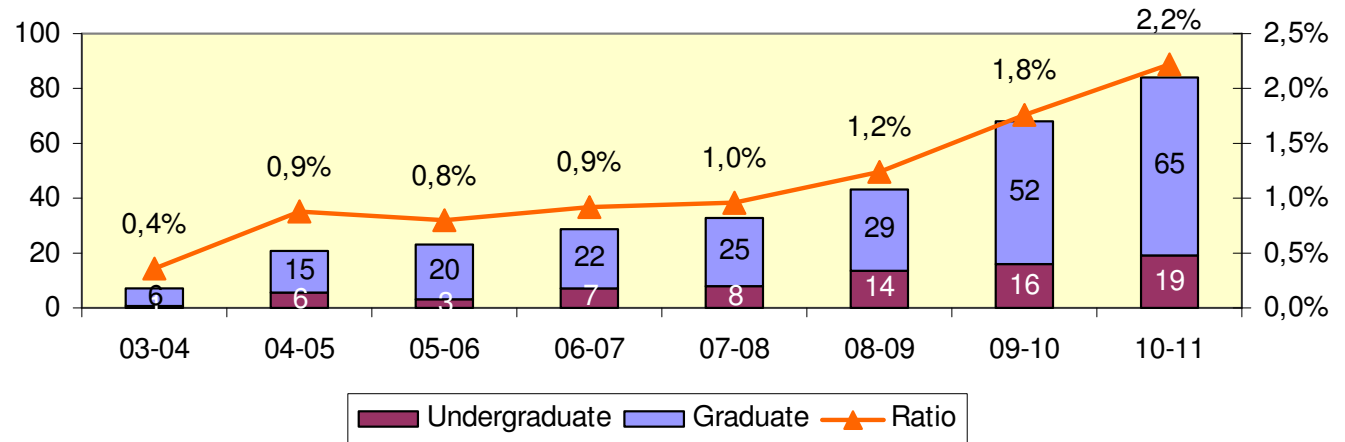
International Student Ratio is increasing



Exchange Students



Degree Seeking International Students



26% of our 4042 Alumni pursue graduate studies



Stanford University

Brown University

MIT

Cornell University

University of Chicago

Northwestern University

University of California

London School of Economics

Cambridge University

Koc University

Carnegie Mellon University

Max Planck Institute

University of Pittsburg

University of Minnesota

Harvard University

Bilkent University

Bogazici University

Sabancı University

Texas A&M University

55% of our Alumni pursue professional careers



Garanti Technology

Procter & Gamble

Beksa

Coca-Cola

Unilever

Deutsche Bank

TUBITAK

Akbank

KordSA

Dogus

Ford

Borusan

Efes Pilsen

Siemens

Turkcell

Toyota

BriSA

Garanti Bank

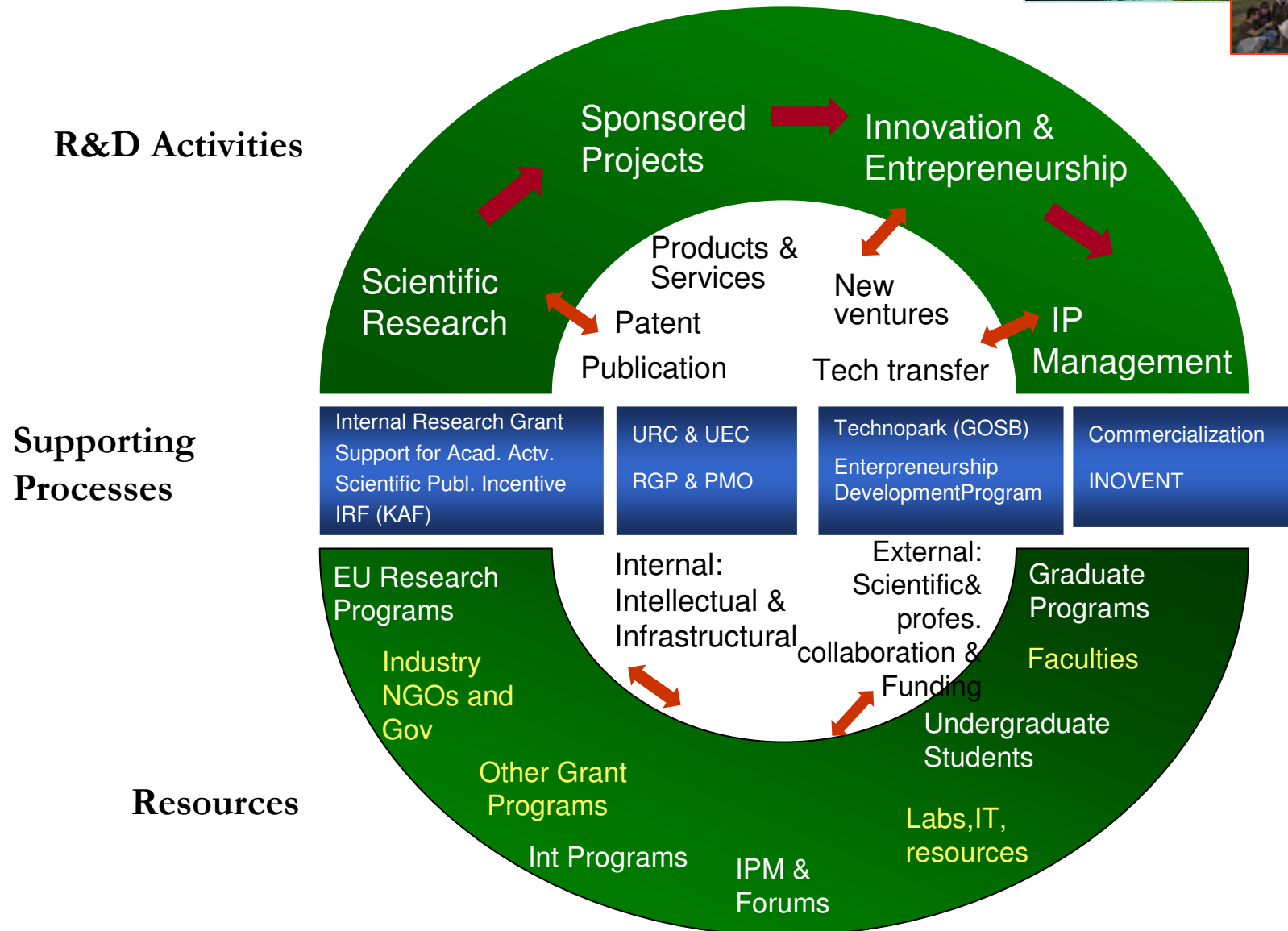
Deloitte

Start-up companies founded by SU Alumni in areas such as Information Technology, Software Development, and Advanced Materials, of which two are based abroad.

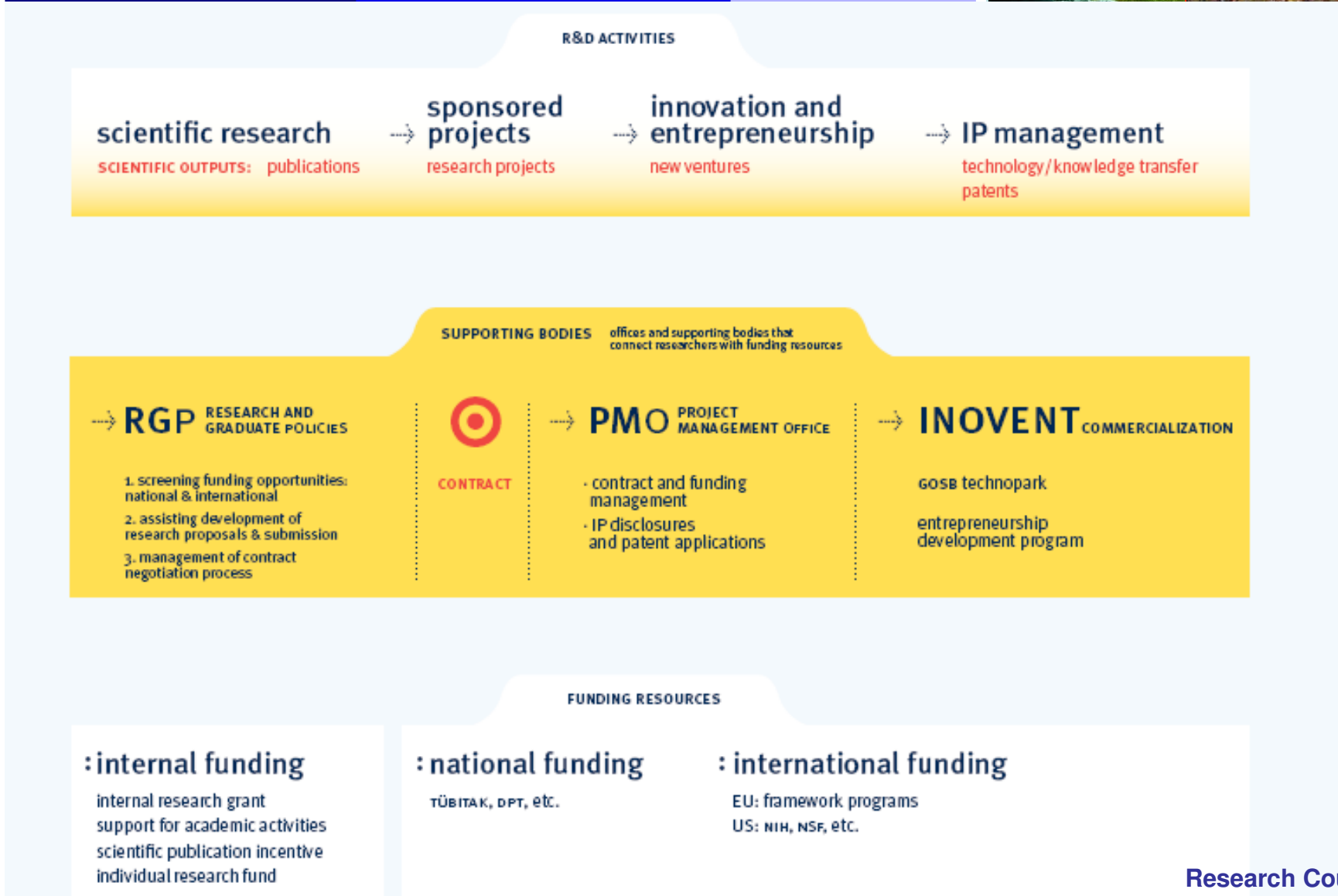


Research and IP Management

Research Value Chain

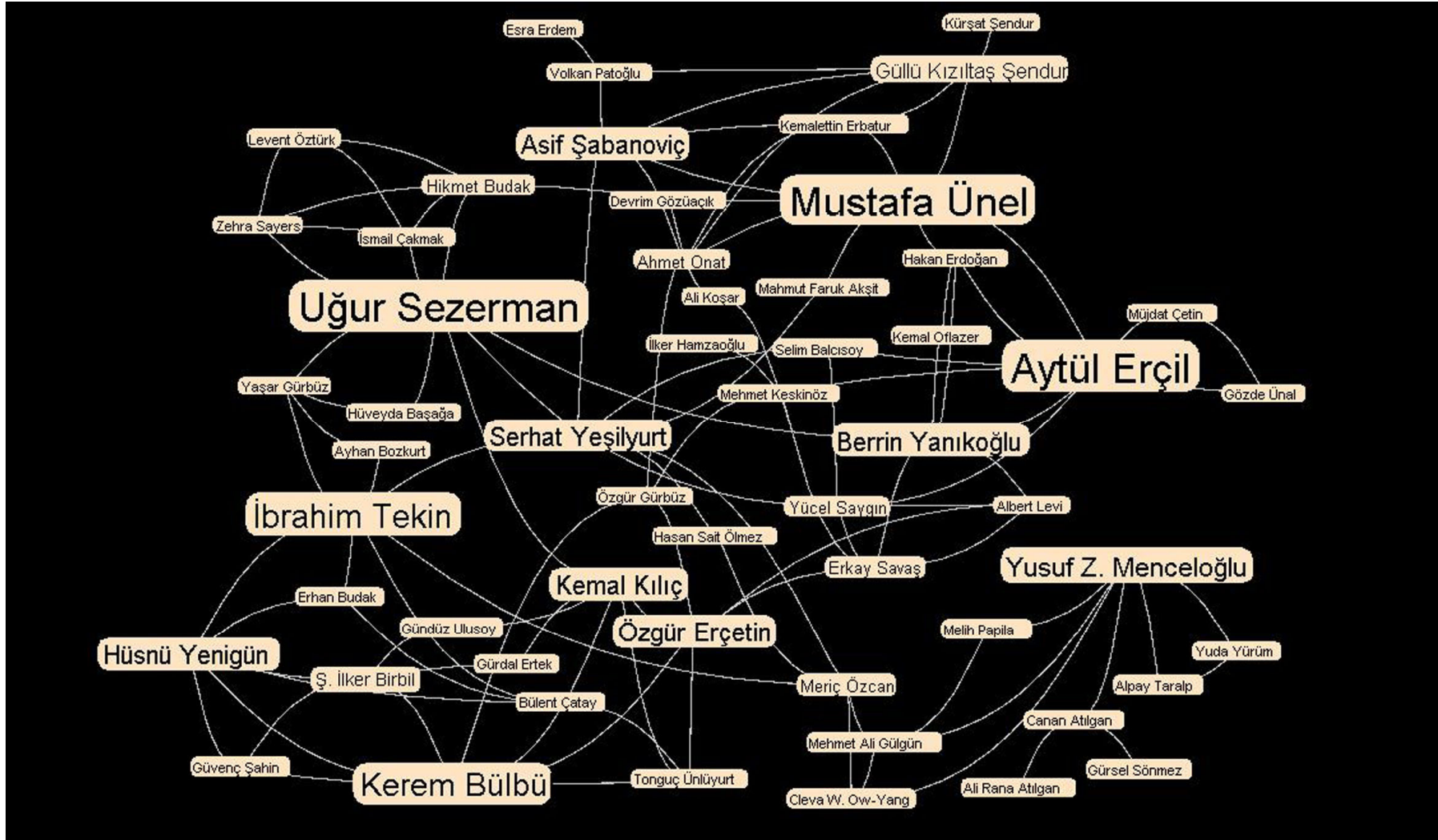


Research Management process at Sabanci University

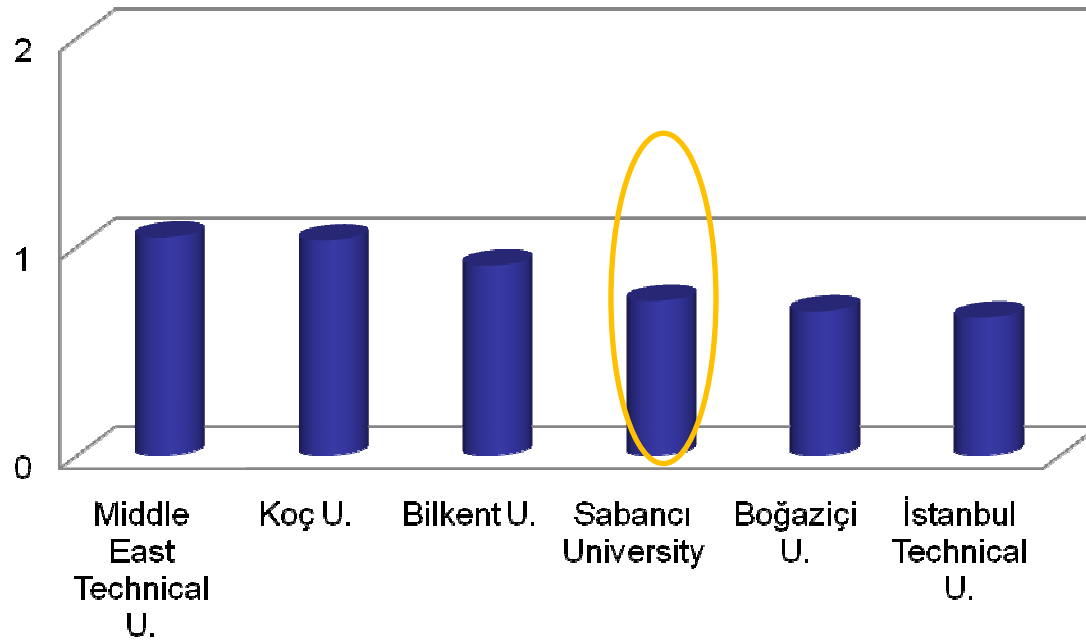


Research Councils:
University Research Council(URC), Research Ethics Council (REC)

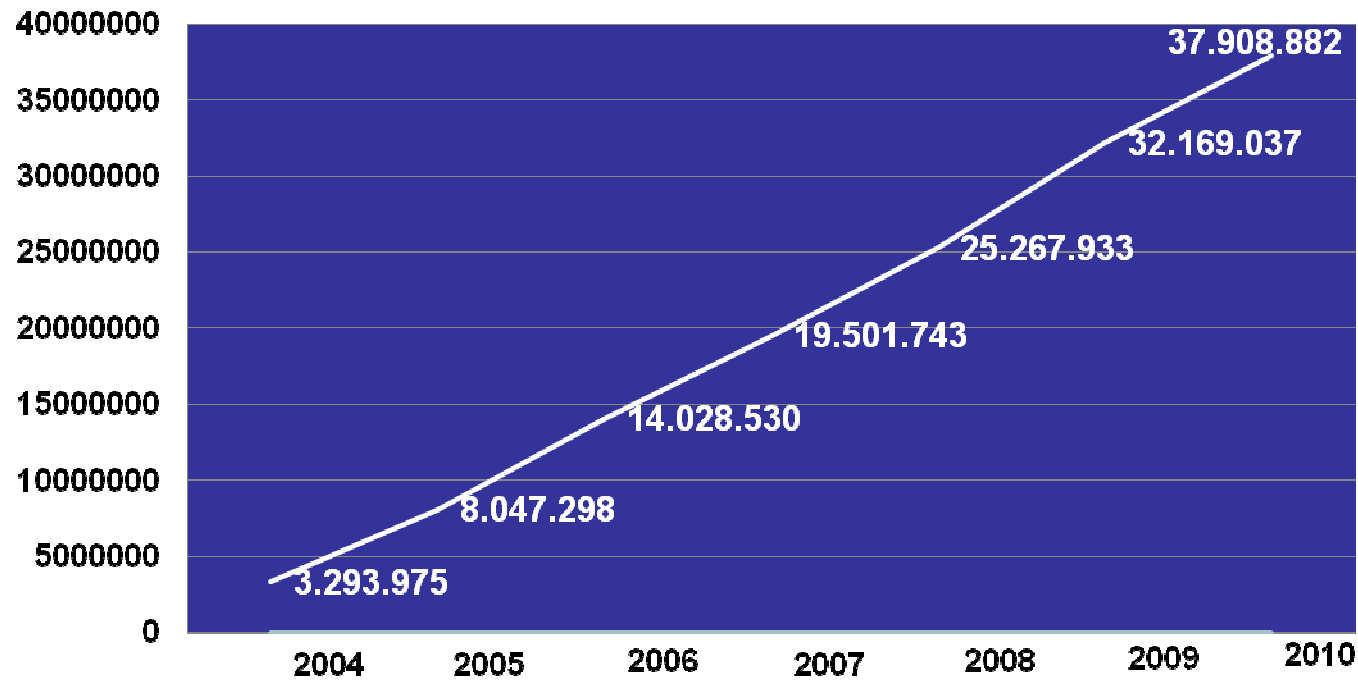
RESEARCH COLLOBORATIONS BETWEEN FENS FACULTY MEMBERS



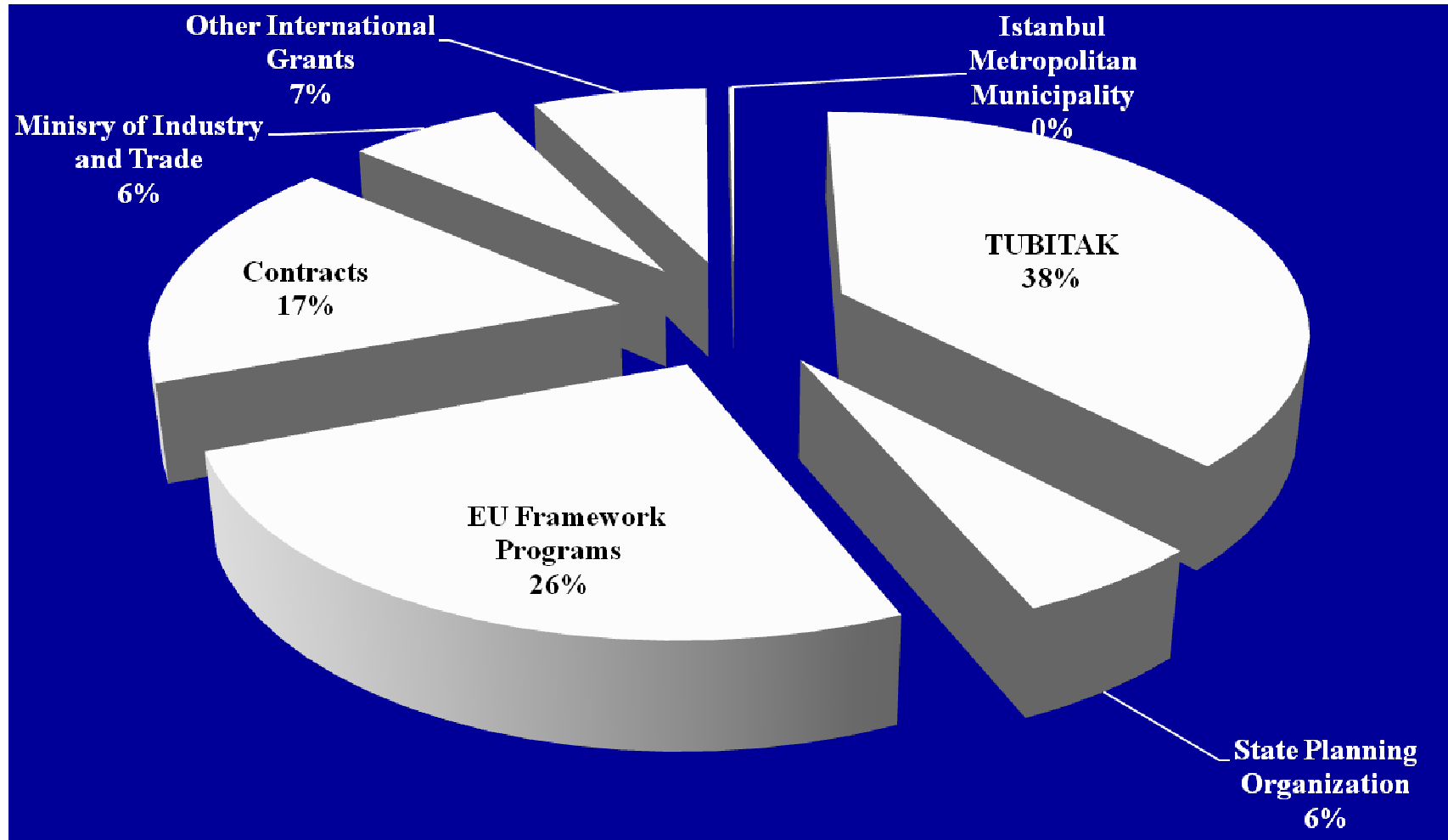
Average Indexed Publications Per Faculty (2006-2009)



Cumulative Growth of Sponsored Research Funding (2004-2010) (M€)



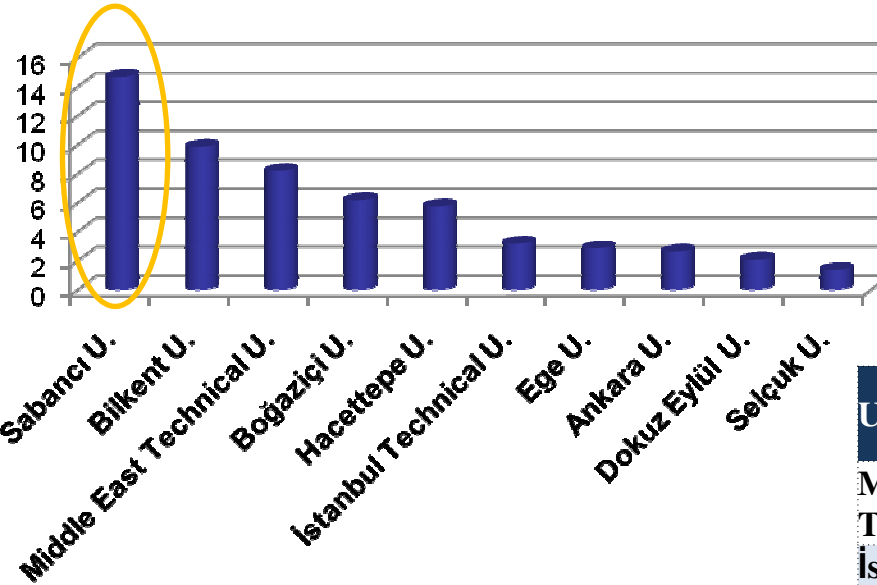
Funding Distribution Based on Sponsoring Agency (2004-2010)



Performance Comparison of Turkish Universities in TUBITAK Research Grants



Funding (K€) in 2010 * /per Faculty Member **



University	Funding (K€) in 2010	# of Faculty Member
Middle East Technical U.	6.044	739
İstanbul Technical U.	5.400	1703
Ankara U.	4.209	1605
Ege U.	4.120	1443
Bilkent U.	3.443	350
Sabancı U.	2.523	172
Dokuz Eylül U.	2.336	1126
Selçuk U.	2.311	1707
Hacettepe U.	2.298	401
Boğaziçi U.	2.217	359

* http://www.tubitak.gov.tr/tubitak_content_files/ARDEB/ARDEB10.pdf

** <http://www.yok.gov.tr/content/view/527/222/>

TURKEY'S EU 7TH Framework Program Performance (2007-2010)



	FP6 (2003-2006)	FP7 (2007-2010)
Share of Turkish Partners (million €)	53,5	82,4
National Contributions (million €)	185	80,5
Share of Turkish Partners/National Contributions	28,9%	102,4%

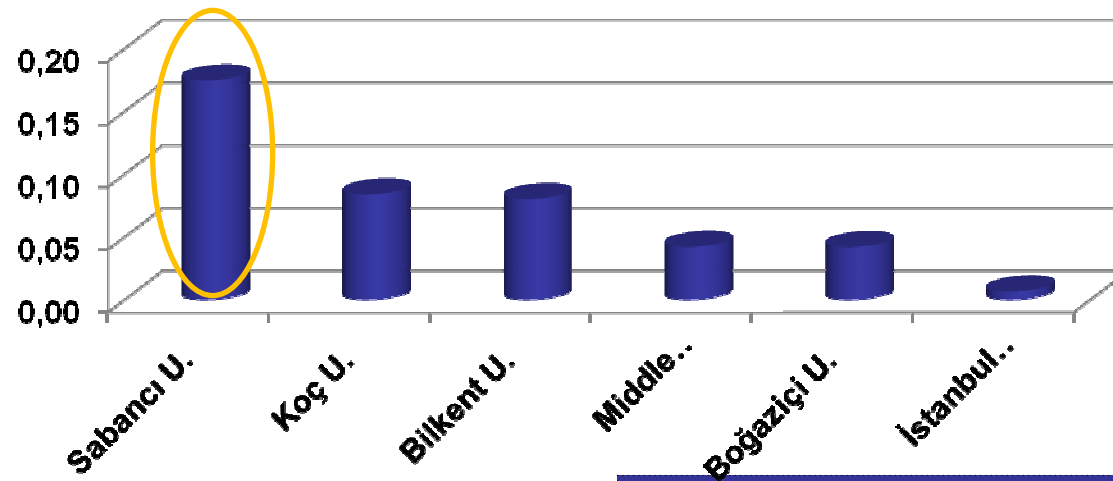
	University	OTHERS (Industry, NGOs)
FP7 Total Budget	38,7 Million €	43,7 Million €
	47%	53%

FP7 Performance of the Turkish Universities (2007-2010)



FP7 Total University Budget 38,7 M€, %47

Number of Project / Per Faculty Member



University	# of Project *	# of Faculty Member **
Middle East Technical U.	31	739
Sabancı U.	30	172
Bilkent U.	28	350
Boğaziçi U.	15	359
Koç U.	14	167
İstanbul Technical U.	11	1703

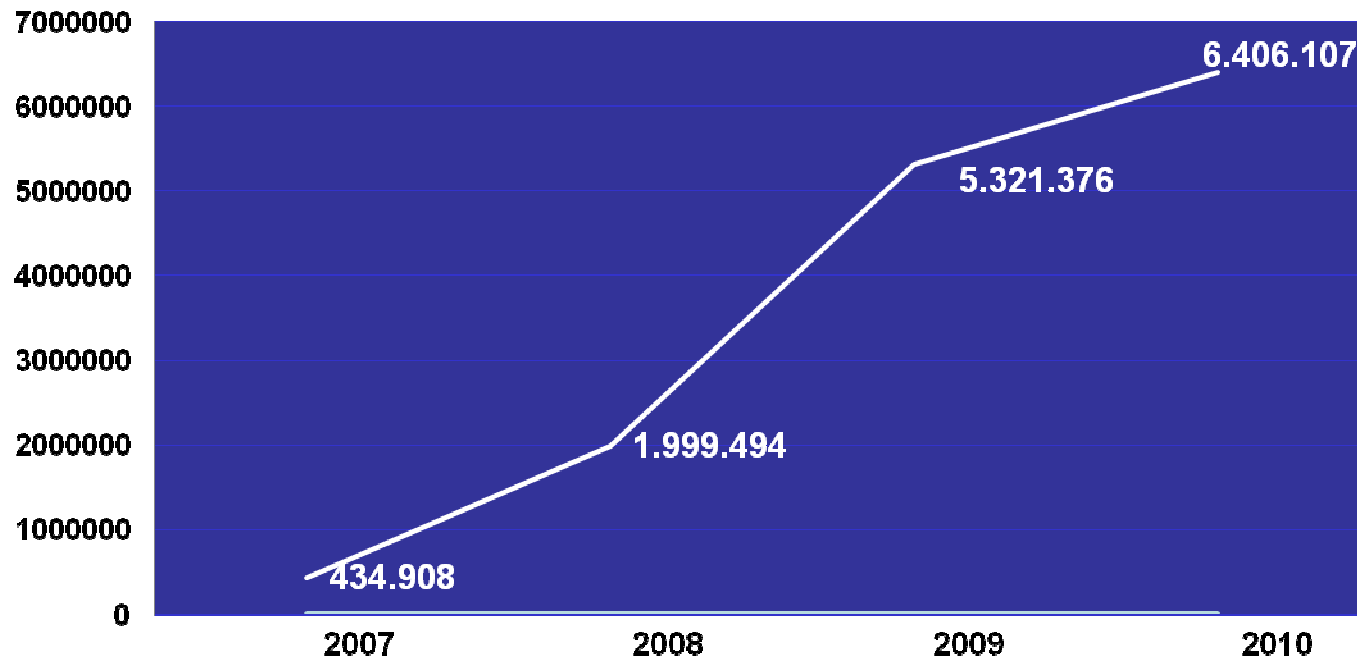
* http://www.tubitak.gov.tr/tubitak_content_files/BTYPD/btyk/22/BTYK22_Ek2_AB_7CP_Ulke_Performansi.pdf

** <http://www.yok.gov.tr/content/view/527/222/>

SABANCI UNIVERSITY'S EU 7TH Framework Program Performance (2007-2010)



FP7 Total Budget 82,4 M€, SU share 6,4 M€ (%7)



FP7 Total University Budget 38,7M€, SU Share 6,4 M€ (%15.3)

External Research Projects (ERP), Technology Transfer Projects (TTP) and Publications At SU

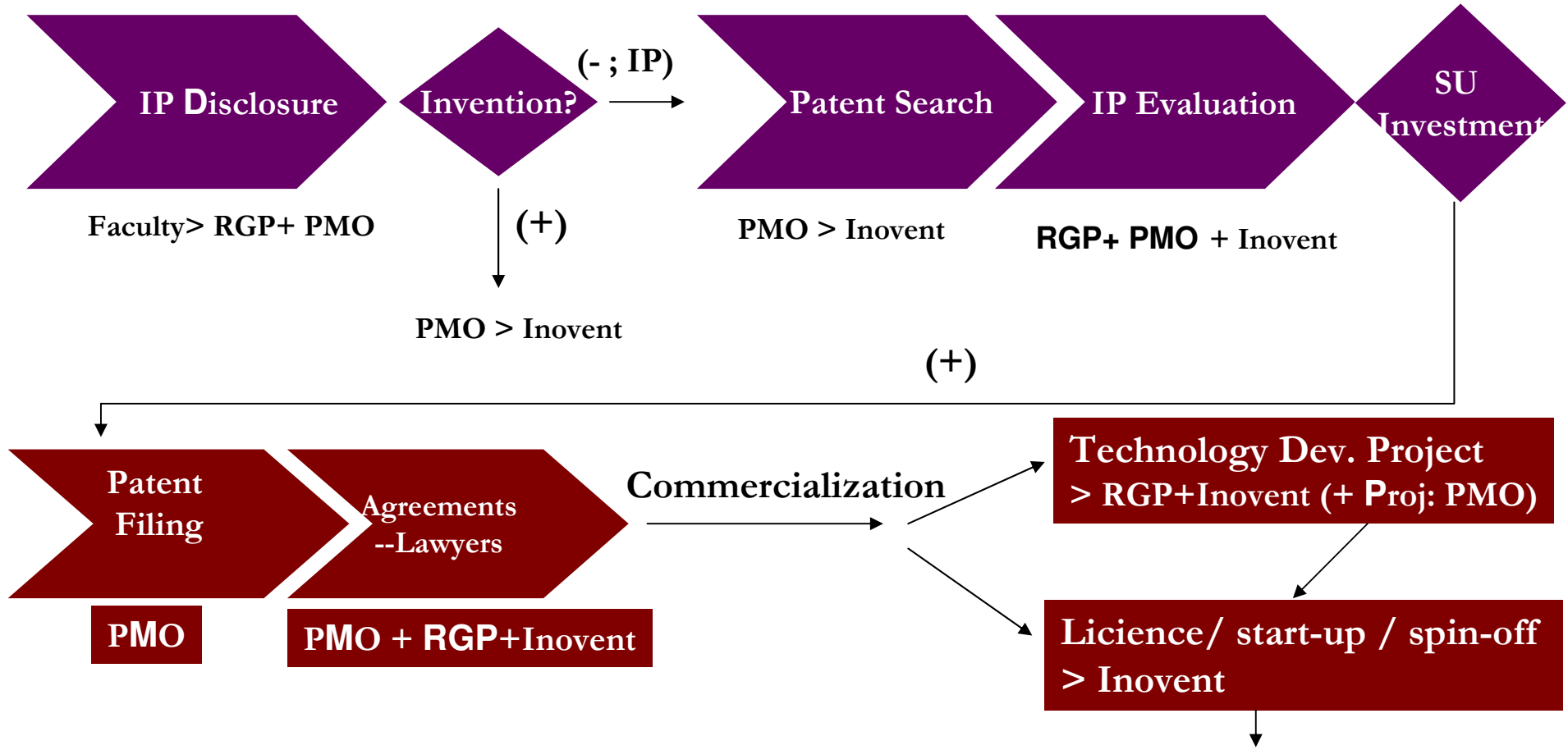


	# of Faculty	TTP	ERP	Publications	Publications/Per Faculty (%)	ERP/Per Faculty (%)
Total	95	86	280	901	9,5	2,9
Involved in TTP	26	86	167	380	14,6	6,4

Distribution of Sabancı University Faculty Member's (Involved in TTP) According to Disciplines

Computer Science	5 Faculty Members
Biological Sciences and Bioengineering	3 Faculty Members
Mechatronics	3 Faculty Members
Materials Science and Eng.	3 Faculty Members
Manufacturing Systems & Industrial Eng	6 Faculty Members
Electronics Engineering	6 Faculty Members

IP Management



IP Portfolio



- Sabancı University Technologies
 - 41 IP Disclosure
 - 2 International Patents
 - 21 Application
- 19 of SU faculty members have 160 patents.

INOVENT: Intellectual Property Rights Management & Investment Inc.



- Founded in 2006 by Sabancı University, Inovent was the first technology commercialization office to be established in Turkey.
- Specialized in commercialization and Financing of IPs, business ideas and technologies developed in universities, research centers, and industry.
- International Advisory Board consisting of major venture capitalists and business people was established.

INOVENT



- The Number of Established Companies;**17**
- The Number of Active Companies; **11** (4 Companies Exit, 2 Companies Closed)
- The Number of The Newly Established Companies in 2010; **5**

QS World University Rankings



<http://www.topuniversities.com/worlduniversityrankings/>

Criteria:

- **Research Quality**
(peer review 40% + citations per faculty 20%),
- **Graduate Employability**
(recruiter review 10%)
- **International Outlook**
(international faculty ratio 5% + international students ratio 5%)
- **Teaching Quality**
(student/faculty ratio 20%)

UNIVERSITY	2008	2009	2010
BILKENT U.	374	360	332
SABANCI U.	400-500	500-600	401-450
KOÇ U.	400-500	400-500	401-450
ISTANBUL U.	400-500	400-500	401-450
ISTANBUL T. U.	376	400-500	451-500
CUKUROVA U.	500+	600+	601+
HACETTEPE U.	500+	600+	601+

Thank You!

www.sabanciuniv.edu

